

**Overview**

Bluetooth is a wireless communication network intended for short-range connection of devices to a computer. It operates similar to USB, but without cables. It is not intended to be a computer network like wireless Ethernet.

Range

Bluetooth supports three distance ranges or power classes. A Class 1 device is designed for long-range communications of about 300 feet. Class 2 devices operate over a range of about 30 feet. Class 3 is intended for very short-range devices.

Why Bluetooth?**Wireless Access**

Unico has developed a suite of software that allows a personal computer or PDA to download programs, archive data and events, chart parameters, and function as a remote keypad. Most of the time this requires walking up to the drive cabinet and physically connecting a cable from the PC or PDA to the drive. PDA manufacturers do not have a standard direct physical connection. Laptop computers are now supplied without an RS-232 port. A wireless solution eliminates the various cumbersome cables necessary to provide communication.

Availability

Bluetooth was selected as the wireless network because it is readily available for both PDAs and PCs. It is a standard feature with some PDAs and can be easily added to most others. Economical USB converters and PCMCIA cards for Bluetooth are available for the PC.

Performance and Cost

Infrared was considered for the communication connection. However, infrared has problems operating outdoors and is unsuitable for streaming data during a download because communication is frequently lost. Other wireless solutions simply are not economical.

Requirements**Location**

Drive:
PDA with Palm OS:

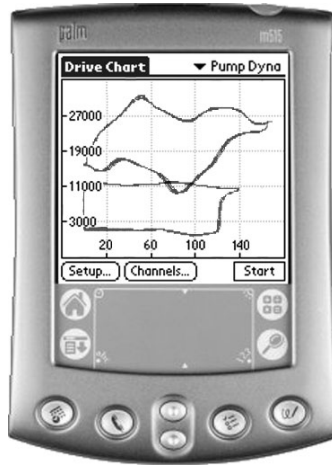
Laptop:

Device

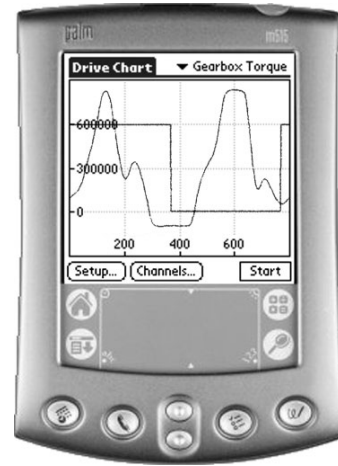
RS-232-to-Bluetooth converter
Built-in Bluetooth (Palm Tungsten T2) or
SDIO Bluetooth card (Palm 500 Series or i705)
USB-to-Bluetooth or PCMCIA Bluetooth

Handheld Interface

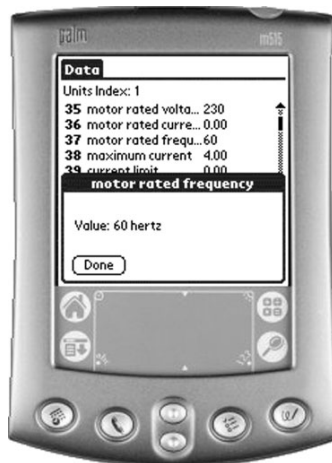
Representative screens from a Palm-type interface for a sucker-rod pump drive.



DynaCard screen



Gearbox torque screen



Data screen

UNICO-Worldwide



All trade designations are provided without reference to the rights of their respective owners.

Specifications subject to change without notice.

Corporate Headquarters

UNICO, Inc.
 3725 Nicholson Road
 P. O. Box 0505
 Franksville, Wisconsin
 53126-0505
 USA

voice: 262.886.5678
 fax: 262.504.7396
 www.unicous.com

United States

Novi, Michigan 248.380.7610
 New Lenox, Illinois 815.485.5775
 Sandy, Utah 801.501.7586

Canada
 Mississauga, Ontario
 905.602.4677

South America

El Tigre, Venezuela 58.283.241.4024

Europe
 Milton Keynes, England
 44.1908.260000

Wilnsdorf, Germany
 49.2739.303.0

Asia

Osaka, Japan 81.66.945.0077
 Beijing, China 86.10.6218.6365