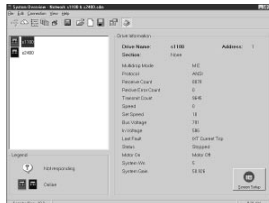




Overview DriveLink™ is a drive monitoring program that provides complete control of UNICO's 1100 and 2400 series drives from a Windows-based personal computer. In addition to emulating standard keypad interface functions, the program furnishes a variety of powerful diagnostic, monitoring, and data archiving tools to aid in troubleshooting and drive management.



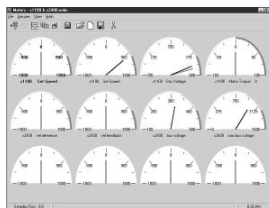
System Overview Screen

The *System Overview* screen graphically displays the status of each drive at a glance. Up to 15 parameters can be continuously monitored at once. The list of parameters that are displayed can be chosen for each drive independently.



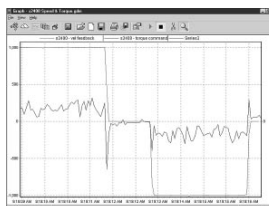
Keypad Control

DriveLink™ simulates the interfaces of both the 1100 and 2400 series drives, allowing the user to remotely access all of the features and functions normally available at the drives themselves. Keypad control is accessible at any time from any screen.



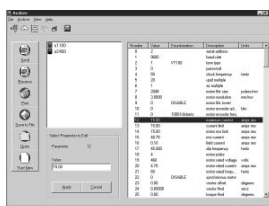
Meter Screen

The *Meter* screen provides a graphical portrayal of drive data with the look and feel of a panel of meters. Twelve meters can be viewed at a time, each of which can be configured to reflect a wide variety of readout or parameter values.



Graph Screen

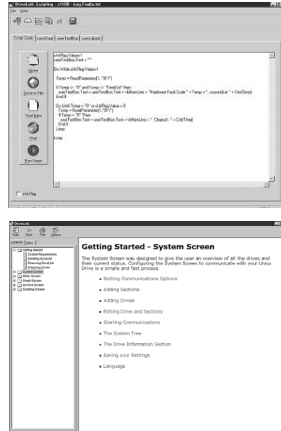
The four-channel strip/circular chart recorder found on the *Graph* screen allows users monitor and record data much like a graph recorder. Data can be stored and analyzed in either raw or graphical formats. Sampling rates can be varied to meet short- and long-term monitoring requirements.



Data Archiving

A data-archiving feature lets users manage a drive's parameter set. With the single click of a button, a complete record of every parameter can be captured for safekeeping on disk, for printing, or for editing off-line. Data can be quickly restored in case of emergency or copied to another drive for speedy setup. Archives can also be compared to determine which parameters have changed.

Overview (continued)



Scripting Screen

DriveLink's functionality can be extended using its scripting capabilities. VBScript or JavaScript modules can be created to log faults or production data, schedule drive motion, or accommodate many other application-specific needs.

On-line Help

An extensive on-line help system guides users through the installation, setup, and operation of the DriveLink™ program.

Networking Drives

Multiple drives can be connected together to form a local network. DriveLink™ can monitor and control as many as 99 drives.

Remote Access

Modem support allows drives to be accessed remotely over telephone lines for long-distance monitoring and control.

Multilingual Support

English and Spanish versions are available. Consult UNICO for other languages.

Specifications Packages

Basic (804-139)

- CD-ROM including DriveLink™ software and on-line help (multiuser licenses available)

Basic with Cables (319-431)

- Basic package with cables for either the 1100 or 2400 series drive (please specify at time of purchase)

Turnkey

- Portable, hand-held computer with Pentium 120 MMX processor, 1.5 GB hard drive, and a 6.1" diagonal display
- Software fully loaded and configured
- Includes necessary cables and Electronic Troubleshooting System software (please specify 1100 or 2400 drive at time of purchase)



Minimum Requirements

- UNICO 1100 or 2400 series drive supporting the ANSI standard protocol
- Windows 95 with Service Pack 1 and KRNLUPD.EXE, Windows 98, Windows NT 3.51 (Service Pack 5), or Windows NT 4.0 (Service Pack 3) operating system
- 90 MHz Pentium processor
- 32 MB of application RAM
- 50 MB of available hard drive space for standard installation
- CD-ROM drive for installation
- Serial communications port
- RS-232-to-RS-485 converter, if needed
- Color monitor and video card supporting 800 x 600 pixel resolution
- Mouse

UNICO-Worldwide

Corporate Headquarters
UNICO, Inc.
3725 Nicholson Road
P. O. Box 0505
Franksville, Wisconsin
53126-0505
USA

voice: 262.886.5678
fax: 262.504.7396

www.unicous.com

United States
Novi, Michigan
248.380.7610
New Lenox, Illinois
815.485.5775
Sandy, Utah
801.501.7586

Canada
Mississauga,
Ontario
905.602.4677

South America
El Tigre, Venezuela
58.283.241.4024
Europe
Milton Keynes,
England
44.1908.260000

Wilnsdorf, Germany
49.2739.303.0

Asia
Osaka, Japan
81.66.945.0077
Beijing, China
86.10.6218.6365



All trade designations are provided without reference to the rights of their respective owners.

Specifications subject to change without notice.